



PRODUCT DATA SHEET
WALL SYSTEM ARROYO



ARROYO

The most economical wall system, the ARROYO wall panel system is recommended for locations that accessibility is not required. This interior/exterior screw-in system is designed to attach to any substrate, and can be fabricated using composite panels for use in high traffic areas. Using either light or heavy gauge materials, the Series ARROYO wall panel system is highly versatile.

FEATURES

- Available with light or heavy gauge material
- Simple system design allows for different shapes and sizes
- Reveal caps available (flush or recessed)
- Different textures and colors available

BENEFITS

- Easy installation and replacement of panels
- Strong and durable
- Secure and reliable
- Flexible design while remaining economical

ALUMINUM

Material type 3003-H14 (painted and laminated finish) or 5005-H14/32 (anodized finish) to comply with ASTM B-209
Thickness: 0.032” to 0.050”

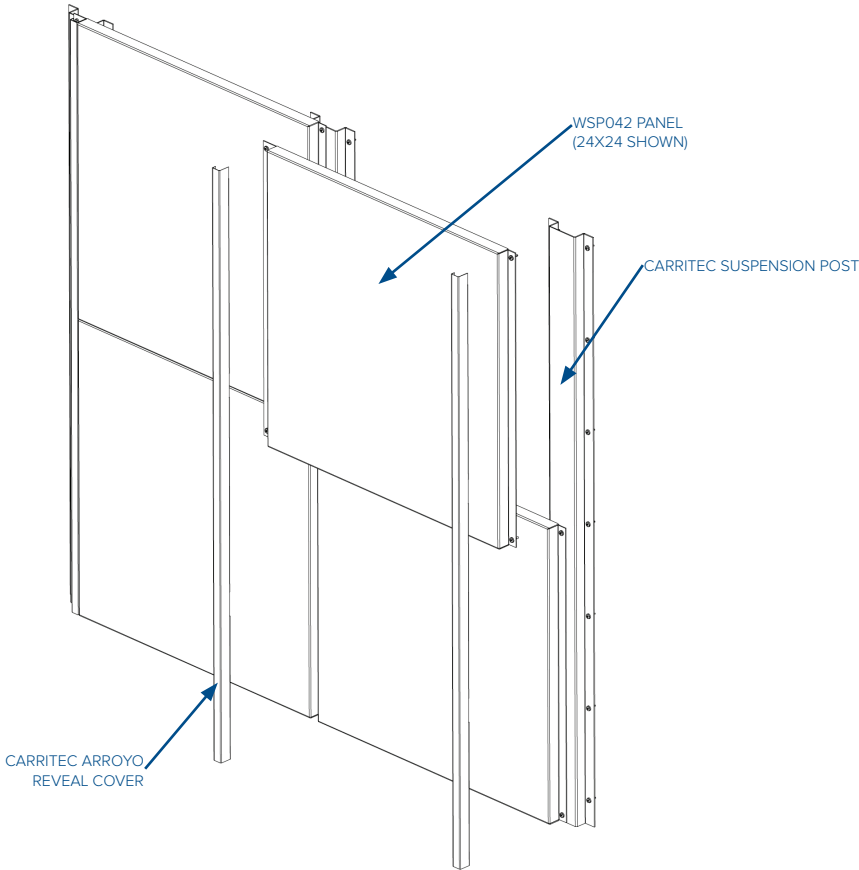
ACOUSTICAL MEDIA

- Non-woven acoustical fabric
- Fiberglass acoustical media encased in black poly or PVC

FIRE RATING

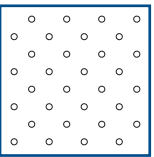
All metal wall panels and associated suspension systems are made entirely of noncombustible materials and meet all known code requirements.

TYPICAL ISOMETRICS & SECTIONS

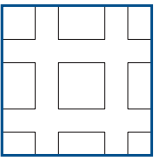


PERFORATION PATTERNS

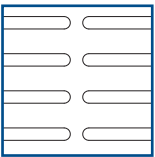
To learn more on our standard perforation patterns and our capability for custom patterns for architectural design, please contact one of our representatives. Custom creative designs are also available.



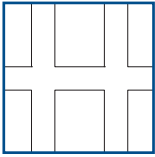
Round patterns



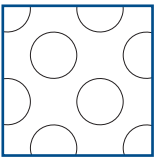
Square patterns



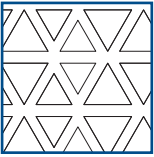
Oblong patterns



Rectangular patterns



Oversize patterns



Custom patterns

STAINLESS STEEL

Material type 304 or 316 to comply with ASTM A-240
Thickness: 0.022” to 0.032”

STEEL

Material to comply with ASTM 653 / A-653-M
Thickness: 0.022” to 0.032”

WALL SYSTEM ARROYO

COLORS & FINISHES

A wide variety of colors and finishes are available. Options shown below are for illustration purposes only. Custom finishes are available on request. Minimum orders and associated lead times may apply to custom options.

ALUMINUM



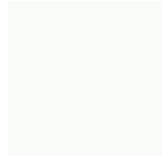
Anodized



Brushed



Polyester powder coat



Pre-painted or post-painted



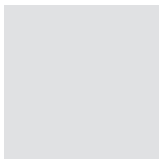
Duranar or Kynar



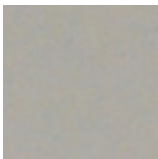
Enamel paint

STEEL

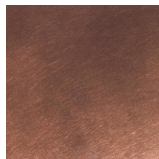
Galvanized or satin coat



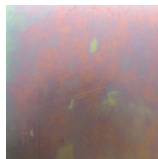
Polyester powder coat



Post painted Kynar 500



Standard plated finishes



Specialty plated finishes

STAINLESS STEEL



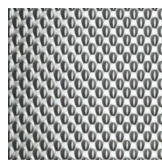
Brushes #4, #6, #7



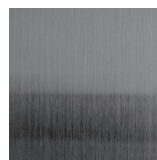
Mirror finish #8, #10



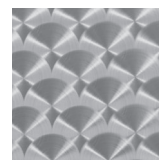
Non directional



Embossed

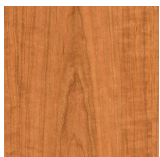


Blackened



Patterned

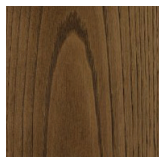
WOOD FINISHES



Cherry



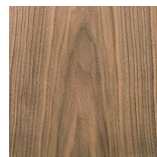
Maple



Chestnut



White Birch



Walnut

www.carritec.com

info@carritec.com

575 Boul Morgan, Baie-d'Urfé, QC H9X 3T6

514 457 7779 | 800 610 0179 | 514 457 5559