



PRODUCT DATA SHEET

WALL SYSTEM FLUME



FLUME

The FLUME wall panel system is designed for heavy gauge material to be used in high traffic public areas. This key slot system allows for an impactful design when strength and durability are a priority. This interlocking system allows for reveals or butt joints both horizontally or vertically, while providing unlimited access.

FEATURES

- Unlimited accessibility
- Heavy gauge material for public areas
- Secure positive engagement on factory punched posts
- Different shapes, sitextures and colors available

BENEFITS

- Easy installation and replacement of panels
- No hassle
- Cost-saving labor
- 100% accessible

ALUMINUM

Material type 3003-H14 (painted and laminated finish) or 5005-H14/32 (anodized finish) to comply with ASTM B-209
 Thickness: 0.032" to 0.050"

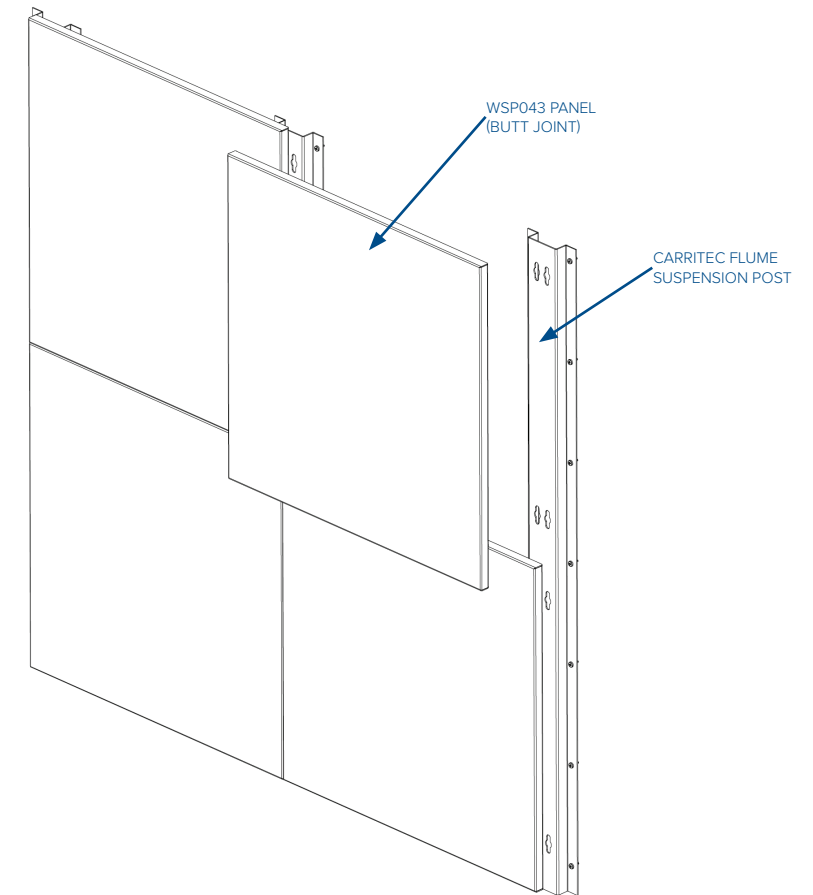
ACOUSTICAL MEDIA

- Non-woven acoustical fabric
- Fiberglass acoustical media encased in black poly or PVC

FIRE RATING

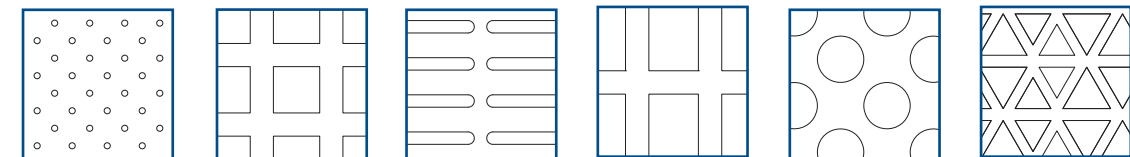
All metal wall panels and associated suspension systems are made entirely of noncombustible materials and meet all known code requirements.

TYPICAL ISOMETRICS & SECTIONS



PERFORATION PATTERNS

To learn more on our standard perforation patterns and our capability for custom patterns for architectural design, please contact one of our representatives. Custom creative designs are also available.



Round patterns

Square patterns

Oblong patterns

Rectangular patterns

Oversize patterns

Custom patterns

STAINLESS STEEL

Material type 304 or 316 to comply with ASTM A-240
 Thickness: 0.022" to 0.032"

STEEL

Material to comply with ASTM 653 / A653M
 Thickness: 0.022" to 0.032"

WALL SYSTEM FLUME

COLORS & FINISHES

A wide variety of colors and finishes are available. Options shown below are for illustration purposes only. Custom finishes are available on request. Minimum orders and associated lead times may apply to custom options.

ALUMINUM



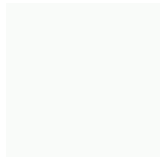
Anodized



Brushed



Polyester powder coat



Pre-painted or post-painted



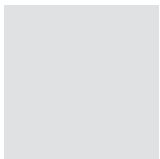
Duranar or Kynar



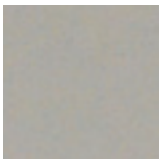
Enamel paint

STEEL

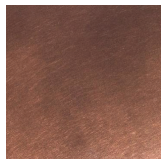
Galvanized or satin coat



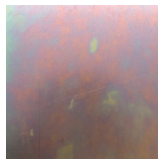
Polyester powder coat



Post painted Kynar 500



Standard plated finishes



Specialty plated finishes

STAINLESS STEEL



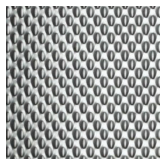
Brushes #4, #6, #7



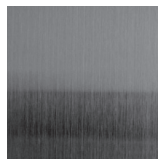
Mirror finish #8, #10



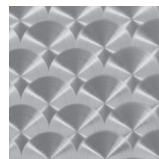
Non directional



Embossed

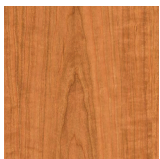


Blackened



Patterned

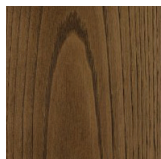
WOOD FINISHES



Cherry



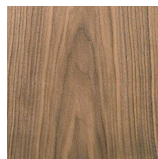
Maple



Chestnut



White Birch



Walnut

www.carritec.com

info@carritec.com

575 Boul Morgan, Baie-d'Urfé, QC H9X 3T6

514 457 7779 | 800 610 0179 | 514 457 5559